

UNMARKED HAND-TURNED STONEWARE PRODUCED BY ALABAMA POTTERS

Arranged According to utilitarian Style or Form

in the collection of

Bill Garland

mtlongleaf@gmail.com

Probably and possibly are used to express a lesser degree of confidence in pottery location.

Revised: July 2023

BOWL

Randolph County

Salt



Pittman Brothers
Rock Mills, Alabama

Originally found in Roanoke

A1

BOWL

Randolph County



Alkaline

Mapp Pottery Shop, Bacon Level, Randolph County

A2

BOWL

Probably West
Central Alabama



Originally found
in Marion

Salt glazed
outside and
feldspar insides

A3

BOWL

DeKalb County



Alkaline

Sand
Mountain

Possibly
T.J. Henry

A4

BOWL

Blount County



Feldspar

Originally found in
southern Blount County

A5

BOWL



Alkaline

Possibly Elmore
Autauga-Perry
County Region

A8

BOWL



1 gal

Sterrett
Shelby County

Lime based
Alkaline Glaze



A143

CREAM RISER

Alkaline
1/2 gal
Cream Riser

Found in
Cleburne Co.

Probably Cleburne
County, possibly
From the
Pitchford shop

CREAM RISER



Cleburne
County

Alkaline
3 gal
Cream Riser

Found in a barn,
Spring Garden,
southern Cherokee
County

CUP



Probably made by
Mapp Family in
Bacon Level,
Randolph County

Circa 1900-1930

Originally found
in Anniston

Alkaline

4 1/2"



A9

CUP



Probably Sterrett

Alkaline and/or
Feldspar

Originally found
in Birmingham

4"



A10

TOY PITCHER

1 5/8"

Originally found
near Sterrett



Probably
Sterrett

Alkaline

Sterrett potters
are known to
have made
toys for
area children

A11

TOY PITCHER



Probably Cleburne County

Some blue rutile characteristic
of Cleburne Co. pottery

No spout on the pottery
indicates not used as a
creamer or pitcher

Originally found on the Hwy
11 yard sale along with a
distinctive Cleburne Co jug

Alkaline

3"

A12

CREAM PITCHER



4 1/2 "

Mapp Pottery

Bacon Level
Randolph County

Alkaline glaze with
a possible commercial
slip mixture

Originally found in
East Alabama

A13

CREAM PITCHER



Mapp Pottery

Bacon Level
Randolph County

Alkaline glaze with
a possible commercial
slip mixture

Originally found in Anniston

3 1/2"

A14

CREAM PITCHER

Randolph County



Alkaline

Possibly made by
Zachary Ussery

Originally found in Standing
Rock, Randolph County

3 1/2"

A15

CREAM PITCHER

Randolph
County

Alkaline

3½"

Originally found
in Lanett,
Chambers County

A16



CREAM PITCHER

Randolph
County



Alkaline

3 1/2"

Originally found in
Randolph County

A17

CREAM PITCHER



Alkaline

Randolph
County

3 1/4"

Possibly made by
Boggs in Rock Mills

A18

CREAM PITCHER



Randolph
County

Possibly Ussery

Alkaline

3 1/4"

A19

CREAM PITCHER



Randolph County

Possibly Boggs

Alkaline glaze

3 1/2 "

A20

CREAM PITCHER



3 3/4"

Randolph County

Alkaline Glaze



A21

CREAM PITCHER



Randolph
County

Alkaline

3 1/4"



A22

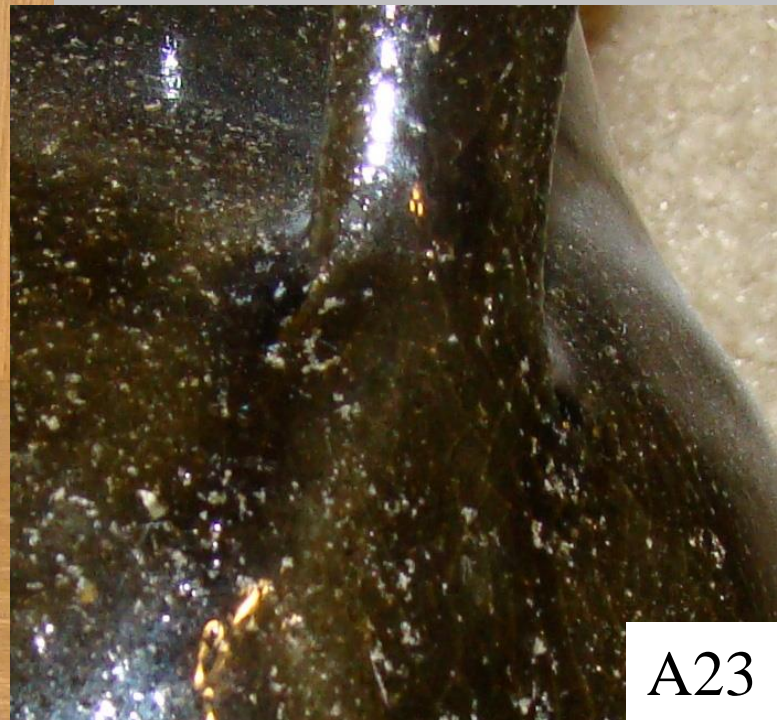
CREAM PITCHER



Found in
Randolph County

Alkaline Glaze or
Commercial Slip

4"



A23

CREAM PITCHER

Albany



Found in East Alabama

A24

CREAM PITCHER



1 pint

Albany

Found in Calhoun
County, Alabama

A25

SUGAR BOWL

1 gal



Pictured in J. Cormany's Book "The Pottery of Oak Level, Cleburne Co. Alabama"

Originally found in Heflin

Alkaline

Circa
1870-1880

Cleburne County,
probably made at
the Pitchford shop

A26

BUTTER DISH

Probably Autauga/Elmore
Co., but possibly Perry Co.

6" tall

Alkaline

Originally
found
in Roanoke



A27

FLASK



salt

Eastern Shore of Mobile Bay
Baldwin County

Dug from a pre-Civil War
privy in Mobile

Glaze and pinkish clay typical
of Baldwin County Potteries

7"

A28

MINIATURE JUG



Possibly
Cleburne
County

3 1/2"

Alkaline

Originally found
in Tallapoosa,
Georgia

A29

MINIATURE JUG

Cleburne County

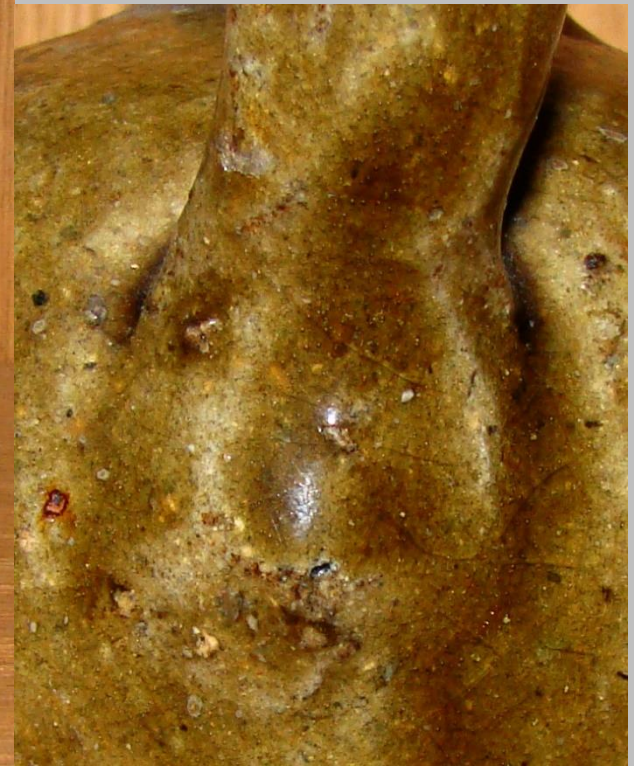
3 1/4"



Photo of jug appears in James Cormany's book, "Pottery of Cleburne County"

Identical to another known jug inscribed "J.A. Rogers"

Alkaline



A30

MINIATURE JUG

4"



Randolph
County

Classic example of Randolph
Co. toy or miniature jug

Originally found in
Standing Rock

Alkaline

A32

JUG

salt

1/2 gal



Baldwin County

Light pink clay diagnostic of pottery made on the Eastern Shore of Mobile Bay

Extruded-like handles reflect the French ancestry of early Mobile potters

Circa 1830-1850

A33

JUG



Salt

1/2 gal

Probably
Baldwin County

Circa 1830-1840

Dug in Mobile

A36

JUG

Possibly
Baldwin county



Salt

Circa
1840-1860

1 gal

Purchased locally
in Mobile area

A37

JUG

Possibly
Baldwin
County



Salt

Circa
1840-1870

1 qt

Purchased locally
in Mobile area

A35

JUG



Probably
Baldwin County

Salt

Circa
1850-1870

1 qt

Purchased locally
in Mobile Area

A34

JUG

Possibly Baldwin
County

Dug in New
Orleans

Circa 1850-1870



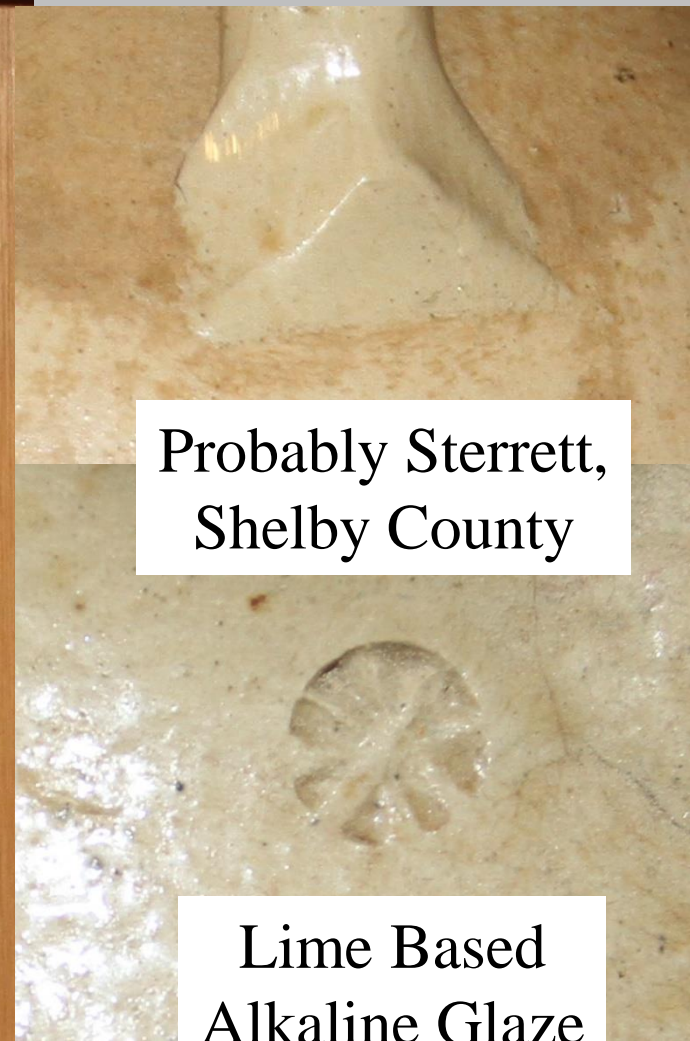
Salt

1 gal

Buff clay color and
style characteristic of
Eastern Shore of Mobile
Bay

A-146

JUG



Probably Sterrett,
Shelby County

Lime Based
Alkaline Glaze

Very early Sterrett jug dating
from 1840-1860

A-144

JUG

Baldwin
County

Typical glaze and
style prior to the
use of Albany slip

Dug in Mobile



Salt

Circa
1875-1890

1/2 gal

A38

JUG



Typical 1/2 gallon Baldwin County salt-glazed jugs dating from 1880s

A38

JUG



Alkaline



Probably
Hickory Flats,
Chambers County

2 gal

Circa
1830-1860



A39

JUG

2 gal



Probably Ussery Shop
Randolph County

The marking may be related to
African American slaves during
the Antebellum Period

Alkaline

Circa 1840-1870

A40

JUG

Alkaline



1 gal



Probably East Alabama

Circa 1840-1860

Originally found in Anniston
with other Randolph Co. jugs

A42

JUG

Alkaline



1 gal



Form, color and style closely match shards and tops at the Ussery kiln in Bacon Level, Randolph County

Very unusual circular symbol near neck

Circa 1860-1880

Originally found in Anniston

A41

JUG

Alkaline

1 gal



Rock Mills,
Randolph
County

Copy of industrial
stacker jug
attributed to the
Boggs family

Originally found
in Rock Mills

A43

JUG

Alkaline

1 gal



Probably
Randolph or
Cleburne
County

Originally found
in Heflin

A44

JUG

Alkaline

2 gal



Probably
Rock Mills,
Randolph
County

Salt drip on jug

Originally found
Jacksonville,
Alabama

A47

JUG



Alkaline



Randolph County

Possibly Boggs family

Originally found in
Oxford, Alabama

1 gal

A45

JUG

Alkaline

1 gal



Probably
Randolph or
Cleburne
County

Originally found
in Anniston

A46

JUG

4 gal



Probably Pittman/Pound
pottery in Rock Mills,
Randolph County

Iron flakes in glaze

Alkaline

A50

JUG

Alkaline

4 gal



Randolph County

Originally found
in East Alabama

A51

JUG

Probably
Randolph
County



Alkaline

3 gal

A52

JUG



Randolph County

3 gal

Alkaline

A53

JUG

Alkaline

2 gal

Locally referred to as a
“bullet jug” and a common
form in Randolph County and
particularly Rock Mills

A54



JUG

Alkaline

1 gal



Randolph
County

Common “bullet”
form diagnostic
of Randolph Co.
pottery

Originally purchased
in Rock Mills

SOLD

JUG



1/2 gal



Randolph County

Possibly Boggs Family

Alkaline

A141

JUG

2 gal



Randolph County

Possibly Boggs family

Alkaline

A67

JUG

Alkaline

Probably
Randolph
County

2 gal

Originally found
in Weaver,
Alabama

SOLD



JUG

3 gal



Alkaline



This distinct coogle wheel marking is diagnostic of Cleburne County potteries

Pictured in J. Cormany's book "The Pottery of Oak Level, Cleburne Co., Alabama"

Originally found in Talladega

A56

JUG

Alkaline

1 gal

Circa
1850-1880



Probably
Cleburne
County

Possibly
from the
Pitchford
Shop

Found near
Anniston

A49

JUG



1 gal

Alkaline

Blue rutile glaze characteristic
of Cleburne County pottery

Originally found in Heflin

A48

JUG



Top often associated with
Cleburne County pottery

Alkaline

1/2 gal

A55

JUG

Alkaline



1 gal



Possibly Cleburne County

Top often associated with
Cleburne County pottery

A66

JUG



2 gal

Alkaline

Probably Cleburne County

SOLD

JUG

Sand
Mountain

Probably made
by T.J. Henry



Alkaline

1 gal

A57

JUG

2 gal

Sterrett,
Shelby County

Originally found
in Sylacauga

Lime based
alkaline

A58



JUG



Probably Blount County

Circa 1860-1880

Originally found in Blount Co.

Lime based
alkaline

1 gal

A59

JUG



Probably Blount County

Circa 1850-1880

Originally found near Oneonta

2 gal

Alkaline

A60

JUG

Alkaline

2 gal

Probably
Blount County

Circa 1850-1880

Originally found
in Jefferson-Blount
Co. area



A61

JUG



Probably Autauga-Elmore
County

Dug along the Alabama
River in Montgomery

Similar jugs exist with
Montgomery merchant
names scratched onto the
jug's surface

2 gal

Circa 1850-1880

Alkaline

A61

JUG



Alkaline

Probably
Autauga-Elmore
County

1 qt

A62

JUG

Alkaline



Autauga/Elmore County

Possible Mulder family

Circa 1850-1880

Originally found in Montgomery

1 gal

A64



JUG



Alkaline

Possibly Perry County

Circa 1860-1880

1/2 gal

A65

JUG



Rye Pottery

Marion County

Alkaline

5 gal

A63

PITCHER

George Glover

Albany/
Bristol

Cullman
County

SOLD

1 gal



PITCHER



Cullman
County

George
Glover

1 gal

Spongeware/
Bristol



A68

PITCHER



George
Glover

Cullman County

1 qt

Bristol/
Spongeware

A69

PITCHER

“Sand Mountain”
DeKalb County



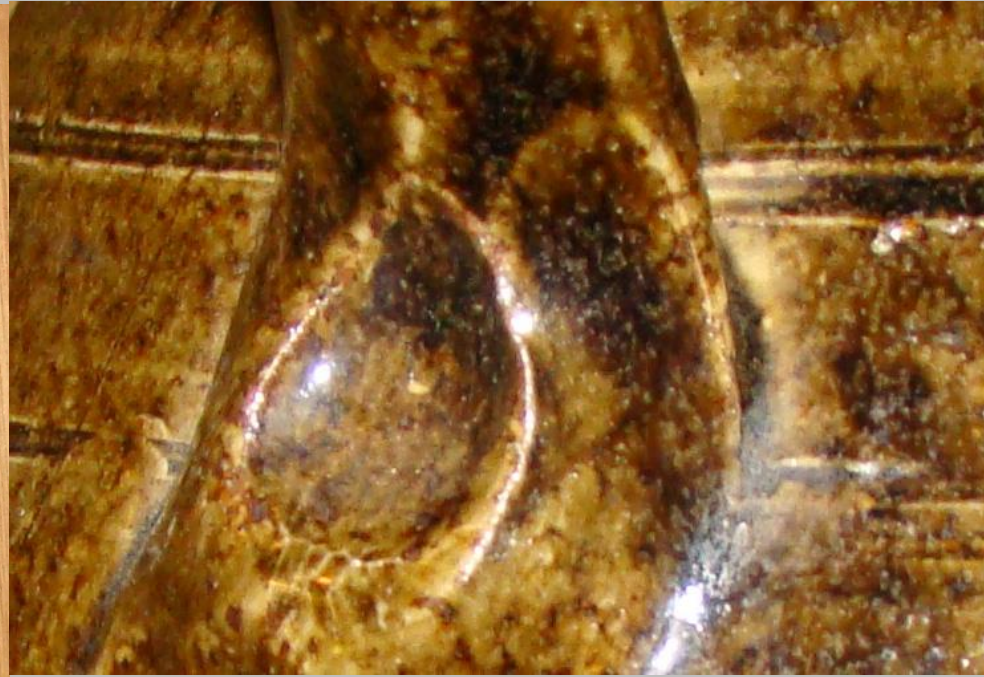
Alkaline

1/2 gal

Originally found
in Pell City

A70

PITCHER



Alkaline

“Sand Mountain”
DeKalb County

½ Gallon

A140

PITCHER



Probably Cleburne
County

Round strap handle occasionally
found in Rogers pottery

Originally found in Jacksonville,
Alabama

1 qt

Alkaline

A71

PITCHER



Probably Randolph
County

Originally found in
Montgomery

1 qt

Alkaline

A72

PITCHER



1 qt



Probably Randolph County

Originally found in DeKalb Co.

Alkaline

A73

PITCHER

Alkaline

1 gal

Pictured in J.
Cormany's book
"The Pottery of
Oak Level,
Cleburne Co.
Alabama"



Probably
Cleburne
County

Originally found
in Anniston

A74

PITCHER

1 gal

Glaze typical of
Cleburne County
pottery

Originally found
in Heflin

Probably
Cleburne
County

Alkaline



A75

PITCHER



Randolph or
Cleburne County

Alkaline

1 quart

6 1/2" tall

Originally found
in Sylacauga

A76

PITCHER



1 qt

Probably
Randolph
County

Possibly Ussery
shop

Alkaline

Originally found
in Birmingham

A77

PITCHER



Cleburne
County

Double dipped glaze
characteristic of Cleburne
County potteries

1 gal

Alkaline

A78

PITCHER



Alkaline



Double dip and coggle wheel
incising diagnostic of Cleburne
County potteries

Pictured in J. Cormany's book
"The Pottery of Oak Level,
Cleburne County Alabama"

1 gal

A79

PITCHER



Cleburne County

Decorative banding is characteristic of early pottery in Cleburne County

Pictured in J. Cormany's book "The Pottery of Oak Level, Cleburne County Alabama"

1/2" gal

Originally found in a barn in Cleburne County

Alkaline

A80

PITCHER



Alkaline

Probably made by
Martin Eckerbusch in
Cleburne or Calhoun Co.
(cleanly wiped terminal)

Eckerbusch made pottery for
Rogers (Cleburne) and
Eichelberger (Calhoun) potteries

Originally found in Heflin

1/2 gal

A81

PITCHER



1/2 gal

Alkaline



Probably Bacon Level
in Randolph County

Originally purchased
in Anniston

A82

PITCHER

Alkaline

Randolph County
Boggs handle
terminal

Originally found
in Roanoke

1/2 gal

A83



PITCHER



Alkaline

Randolph County

Possibly Mapp
Pottery

1/2 gal

A149

PITCHER

Alkaline

Randolph
County

Possibly Ussery or
John Barnes

$\frac{1}{2}$ gal

A84



PITCHER



Randolph County

Pittman Bros. or
Pound, Rock Mills

Salt

1 gal

A85

PITCHER

salt



Randolph County

Probably Pittman Bros.,
Rock Mills

Cursive name scratched
into pitcher

quart

A147

PITCHER



Possibly
Randolph County

Dark wood
ash alkaline

1 gal

Resided in the same
family in Elmore
Co. for generations

A86

PITCHER

1 gal

Alkaline

Marion
County

Possibly
Rye Pottery

SOLD

A87



PITCHER

Lime based
alkaline glaze

1/2 gal



Sterrett,
Shelby County

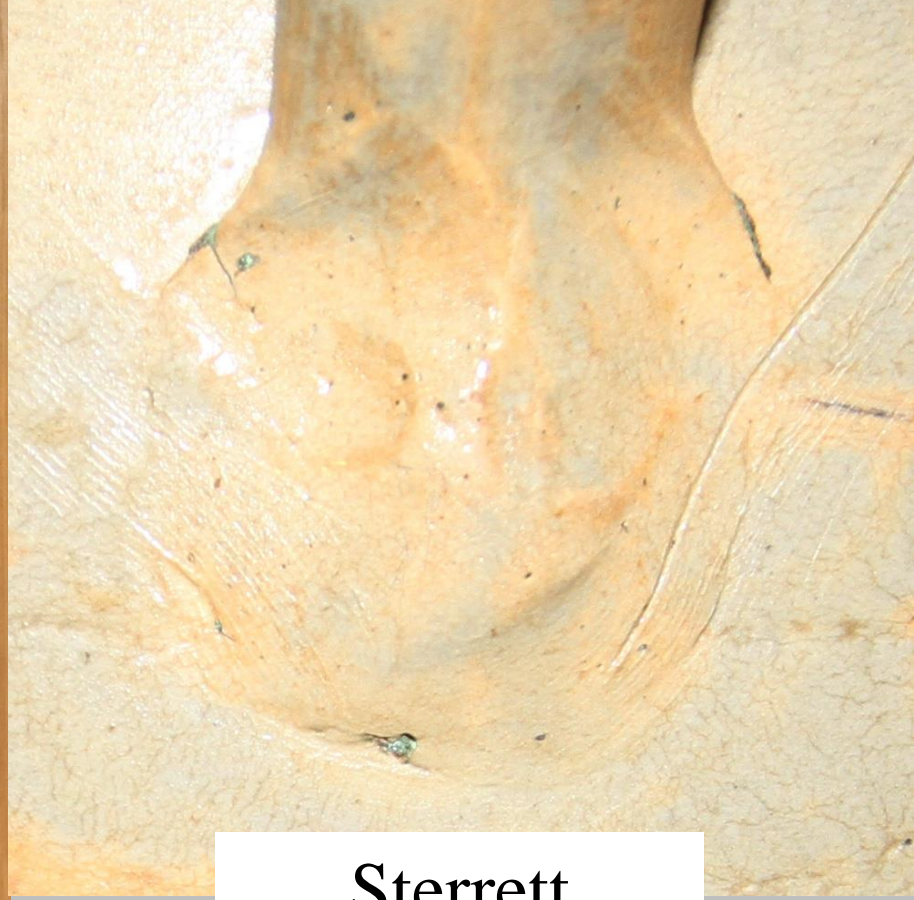
Originally found
in Birmingham

A88

PITCHER



1 gal



Sterrett
Shelby County

Lime Based
Alkaline Glaze

A-145

PITCHER



1 qt

Alkaline

Possibly made at the Mulder Pottery in Elmore County

Originally found in Tallassee

Margaret Ann Mulder thought it was from the Mulder pottery

A89

PITCHER



Probably West
Central Alabama

Found in Selma

1 gal

alkaline

A90

PITCHER

1 gal



Possibly Randolph County

Alkaline

A91

STORAGE JAR



Perry County

Probably James
Williams

Circa 1880-1900

An identical jar marked "JW"
exists in another collection

1 gal

Alkaline

A92

STORAGE JAR



Probably Autauga, Elmore
or Perry County

Alkaline

1 Gallon

Circa 1870-1890



A93

STORAGE JAR



Found in Abbeville,
Henry County

Possibly Lucas Family

Circa 1840-1870

Alkaline

6 gal

SOLD

STORAGE JAR



Found in Abbeville,
Henry County

Possibly Lucas Family

Circa 1840-1870

Alkaline

5 gal

SOLD

HANDLED STORAGE
JAR

1 qt



Probably Randolph County

A similar jar is known with a
stamp "JB" (John Barnes)

There is no spout

Alkaline

A94

STORAGE JAR



East Central
Alabama

5 gal

alkaline

Circa 1880

Originally found
in Anniston

A95

Possibly Bacon
Level, Randolph
County or Hickory
Flats, Chambers
County

STORAGE JAR

5 gal

Salt

Randolph County

Probably
Pittman Brothers

Found in Randolph
County

A96



STORAGE JAR

5 gal

Alkaline



Randolph
County

A97

STORAGE JAR

5 gal

Alkaline

Salt drip suggests this jar was made at the Pittman Bros/Pound potteries in Rock Mills



Randolph
County

Originally found
in Randolph
County

A98

STORAGE JAR

Alkaline

1 gal



Probably Bacon
Level, Randolph
County

Possibly made
by T.C. Henry

A99

STORAGE JAR

1/2 gal

Alkaline



Randolph or
Cleburne County

Originally found
in Anniston

A100

STORAGE JAR

1/2 gal

Randolph
County

Alkaline

Originally found
in Oxford,
Alabama



A101

STORAGE JAR

1 qt

alkaline



Probably
Randolph County

Originally Found
in Anniston

A102

STORAGE JAR

1 gal

Alkaline



Probably
Randolph or
Cleburne County

Originally found
in a Cleburne
County barn

A103

STORAGE JAR



Alkaline

Probably
Cleburne County

Pictured in J. Cormany's book
"The Pottery of Oak Level,
Cleburne County Alabama"

Originally found in Anniston

1 gal

A104

STORAGE JAR

Probably
Randolph
County

Originally found
in Anniston

Alkaline

1 gal

A148



STORAGE JAR



3 gal

Alkaline



Randolph or Cleburne
Counties

Originally found in Heflin

A105

STORAGE JAR



Alkaline

Sand Mountain,
DeKalb County

Combing on both
upper and lower
portions of jar

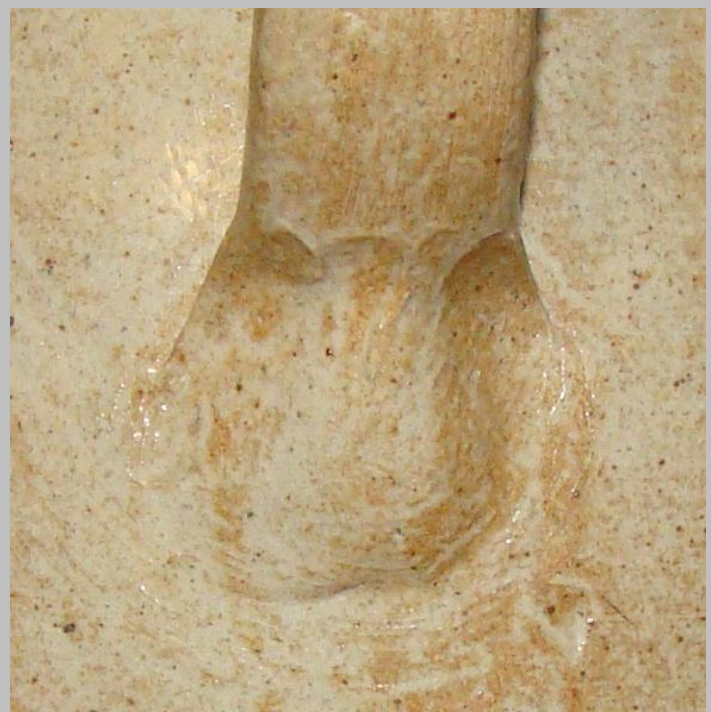
1 gal

A106

STORAGE JAR



1/2 gal



Sterrett
Shelby County

Lime based
alkaline glaze

A107

STORAGE JAR

Lime based
alkaline glaze



Sterrett
Shelby County

Originally found
in Childersburg

10" tall

1 gal

A108

STORAGE JAR



Sterrett
Shelby County

Originally found
in Riverside

Lime based alkaline glaze

12" tall

1 gal

A142

STORAGE JAR

Lime based
alkaline glaze

2 gal



Sterrett
Shelby County

Originally found
in Birmingham

A109

STORAGE JAR

Alkaline



Probably made in
the Mapp Shop,
Bacon Level,
Randolph County

Typical flat green
Mapp glaze

Originally found in Opelika

1 gal

A110

STORAGE JAR



Alkaline

2 gal

Probably Randolph County

4-dot marking appears on other pottery from Randolph County

Originally found in Lineville

Circa 1860-1880

A111



STORAGE JAR

3 gal

Randolph
County

SOLD



Alkaline

Possibly
Boggs

STORAGE JAR

Alkaline

Randolph County

Salt drips suggest Rock Mills

Originally found in
Randolph County

2 gal

A112



STORAGE JAR

Alkaline

2 gal



Randolph
County

Originally found
in Carrolton,
Georgia

A114

STORAGE JAR



Alkaline

Randolph County

Salt drips suggest Rock Mills

Terminal attachment
suggests Boggs

Originally found in
Piedmont, Alabama

2 gal

A115

STORAGE JAR



1 gal

Randolph County

Salt or
frogskin

Several similar molded ridged jars
have been attributed to Bacon Level

Glaze appears to be salt or frogskin,
which suggests Pound/Pittman potteries
as another possibility

Originally found in an older
house in Bacon Level

A116

STORAGE JAR



Alkaline

1 gal



Possibly Davidson

Possibly Blount or Cleburne County

Very unusual sharp ridge on jar's shoulder

Glaze very similar to that produced by
E.E. McPherson on Sand Mountain

Form and glaze have lead some to believe
Davidson may have produced the jar

Originally found in Rome, Georgia

A117

STORAGE



Probably Autauga or
Elmore County

Lime based alkaline
glaze

Originally found in
Montgomery

1/2 gal

A118

STORAGE JAR



5 gal

Baldwin County

Beige color clay diagnostic
of potteries on Eastern
Shore of Mobile Bay

Dug in a Pre-Civil War
Mobile privy

Circa 1825-1850

Salt

A119

CHURN



Alkaline



Probably Cleburne (J.A. Rogers)
or Calhoun County (Eichelberger)

Cleanly wiped handle terminal
suggests maker as Martin Ekerbush

Two-handles on same side of churn
typical of Alabama pottery

Originally found in Heflin

4 gal

A113

CHURN



Alkaline

Cleburne County

Heavy streaming of blue rutile,
which is characteristic of
Cleburne County stoneware

Glossy glaze characteristic of
some Cleburne Co. pottery

Possibly Pitchford shop

Originally found in Jacksonville,
Alabama

4 gal

A115

CHURN



3 gal



Alkaline

Randolph or Cleburne
Counties

Two handles on one side
characteristic of Alabama
potteries

Possibly Boggs

Originally found in Heflin

A114

CHURN



Alkaline

Randolph County

Two handles on one side
characteristic of Alabama
potteries

Possibly Boggs

Originally found in
Randolph County

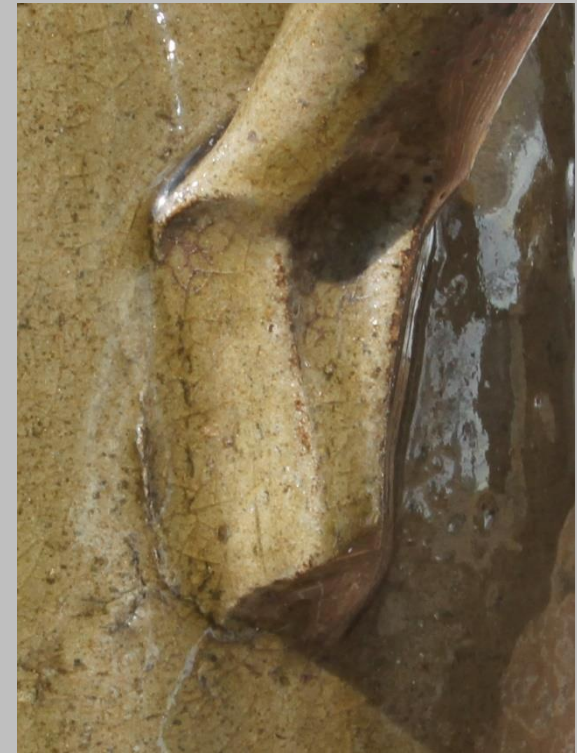
4 gal

A116

PITCHER



Alkaline



Randolph County

Possibly Boggs

5 gal

A150

CHURN

Alkaline

Randolph County

Two handles on one side
characteristic of Alabama
potteries

Originally found in
Lineville, Alabama

4 gal

A117



CHURN



Alkaline

Randolph County

Originally found in Millerville
in Clay County, Alabama

4 gal

A118

CHURN



Probably Cleburne County

Light clay, stamped capacity number and originally from a home in Edwardsville, Ala.

Alkaline

3 gal

A119

CHURN

Alkaline



Cleburne County

Double dipped with coggle wheel decoration and blue rutile diagnostic of Cleburne County

Two handles on one side characteristic of Alabama potteries

Originally found in Heflin

4 gal

A120



CHURN

Alkaline

Randolph or
Chambers County

Possibly Ussery,
Cicero Hudson or
Samuel Duncan

Circa 1860-1880

4 gal

A121



CHURN

Alkaline



East Alabama

Very unique decoration with wavy line and banding of circular lines and elevated ridges

Wavy line similar to Cleburne County decoration

Originally found in Anniston

3 gal

A122



CHURN



Shelby County

Sterrett, Alabama

Two handles on one side
characteristic of Alabama
potteries

Lime based alkaline

Originally found on Chandler
Mountain, St. Clair County

2 gal

A123

CHICKEN WATERER



Alkaline

Probably
Cleburne or
Randolph
County

CHICKEN WATERER

1 gal



Probably Cleburne or
Randolph County

Pictured in J. Cormany's
Book "The Pottery of
Oak Level, Cleburne
Co., Alabama"

Originally found in
Randolph County

Alkaline

A124

CHICKEN WATERER

1 gal

Salt



Probably Pittman Bros.,
Rock Mills in Randolph Co.

Wavy line decoration is known
to have been used at the
Pittman pottery

Originally found in Franklin,
Georgia (15 miles from Rock Mills)

A125

CHICKEN WATERER

1 gal

Alkaline or
Commercial

Found in
Northern
Alabama



A126

FLOWER POT



Salt

Probably
Randolph
County

Probably Pittman
or Pound Pottery

Found in Roanoke

SOLD

FISH-NET OR JUG FISHING FLOAT

salt



Baldwin County

Circa 1870-1890

Completely sealed jug form that likely was used as a net float

Originally purchased at an auction in Lilian, Baldwin County

A127

ANT DEFENDER

Albany



Found in Baldwin County

A128

ANT DEFENDER



Alkaline

Possibly Perry County

Found in Chilton County

A129

ANT DEFENDER

Alkaline Glaze



George Wirt Eichelberger
Circa 1880-1920



Picked up from the waste pile
at the Eichelberger kiln waste
pile in Oxford, Alabama

A130

ANT DEFENDER



Albany

Found in Alabama

A131

UMBRELLA STAND



Probably Randolph County

Top has been seen on other
Randolph Co. pottery

An unglazed stand with similar handles has
been observed in Randolph County

Originally came from a Native American
artifact collection in Alabama

Alkaline

A132

SPITTON

Alkaline



Dug in a privy in
New Orleans

Glaze typical of Perry, Autauga
and Elmore Counties

A133

SPITTOON

Probably Randolph County

Alkaline

Originally found in Randolph County

A134



HAT PIN HOLDER OR FLOWER FROG



Feldspar

Possibly early to
Mid 20th Century Miller
piece from west
central Alabama

Originally found
in Perry County

A135

CHARCOAL BRAZIER



Daphne Pottery,
Baldwin County

Circa 1907-1950

A specialty product unique
to Eastern Shore potteries
during the first half of the
20th Century

Picked up in the woodlands
around the Daphne pottery
years ago

unglazed

A136

BIRDHOUSE

Originally found
in central Alabama

8 inches tall



unglazed

A137

BIRDHOUSE

unglazed

Clay color suggests Baldwin County potteries, Particularly the Daphne pottery

Found in Mobile

11 inches tall

A138



TEAPOT



Probably West
Central Alabama

Possibly made at
Miller Shop by
Sherman Hughey

Circa 1940-1975

Originally found in
Pell City

Albany

A139

A150

Last assigned no.